

LACROIX Sogexi, outdoor lighting business unit of LACROIX City



8, impasse du Bourrelier - BP 30004
44801 Saint-Herblain cedex France
Tel. +33(0)2 40 92 37 30
lacroix@lacroix.com
www.lacroix-city.com

LACROIX Sogexi
1 rue de Maupas
69380 LES CHÈRES - FRANCE
Tel. +33 (0)4 78 47 33 55
info.sogexi@lacroix-city.com

www.lacroix-sogexi.com



CONNECTED
TECHNOLOGIES
FOR **SMARTER
MOBILITY**



Paper from sustainably
managed forests.

Citypak



SMART LIGHTING
JUNCTION BOX



Smart City and smart lighting: new requirements for implementation

With practical applications in mind, LACROIX Sogexi develops future-proof ecosystems for smart lighting and makes them easy to implement thanks to new junction solutions.

LACROIX Sogexi

**THE MARKET
LEADER**

35 YEARS
OF EXPERIENCE

5+ MILLION
BOXES
INSTALLED

ACTIVE IN
40+
COUNTRIES



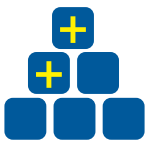
DOWNSIZED LAMPOSTS



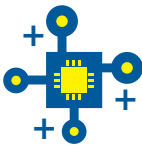
Reduced community investments



Higher-performing lights



MORE ELEMENTS IN LAMPOST BASE



Changing standards:
additional protections



Intelligence and interoperability:
additional modules in the post



New use of the public lighting network, e.g. CCTV:
increasingly complex wiring



THE ANSWER
Citypak

Citypak: the smart lighting junction box



Combining large capacity and compactness, **Citypak** is **the first** junction box designed specifically **for smart lighting**.

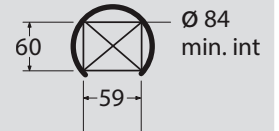




LARGE CAPACITY

Compact: specially designed for posts with a minimum inside diameter of 84mm.

Spacious: three stages with an intermediate zone for protection and/or smart modules.



SCALABILITY adapted to smart lighting

Multipurpose: up to 4 simultaneous functions to adapt the box to all applications.

Modular: adjustable DIN rails and movable terminal block support with two-level height-positioning, to add new functions.

Protecting

Managing

Detecting

Connecting



SIMPLE AND SECURE for installation and maintenance

Easy to install: fixing bracket, adjustable without tools over 170mm.


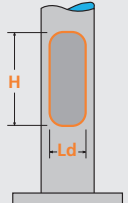

Easy visual inspection and access to protections and smart modules: long top transparent cover.

Easy opening: two independent covers with locking by ¼ turn captive screw.



A wide range of junction boxes, to meet every need



	LOTIPAK	MINIPAK	DYNAPAK	CITYPAK	POLYPAK	INTERPAK	EUROPAK
Junction box inscribed square* (mm) 	L45 x D47	L52 x D47	L59 x D60	L59 x D60	L70 x D84	L70 x D82	L87 x D90
Recommended door dimensions** (mm) 	Ld50 x H300	Ld55 x H300	Ld60 x H300	Ld60 x H400	Ld75 x H300	Ld75 x H400	Ld90 x H500
Min. inside diameter (mm) 	Ø 65	Ø 70	Ø 84	Ø 84	Ø 110	Ø 110	Ø 125

*Inscribed square of the post: space available inside the post (by the access door) to install a junction box and protection.

**Dimensions of the post door: check that the post door is big enough to easily install the junction box selected.

PROTECTION ZONE

Devices for the protection of people/electrical circuits and street lighting continuity.

	LOTIPAK	MINIPAK	DYNAPAK	CITYPAK	POLYPAK	INTERPAK	EUROPAK
Usable depth (mm)	41	41	48	48	65 / 78	65 / 78	78
Usable width (mm)	30	42	54	54	60	63	73
Max. number of modules Fuse Switch Disconnectors / Surge arresters (L = 18mm)	1	2	3	3	3	3	4

INTERMEDIATE ZONE

Available on certain junction boxes for protection devices and/or additional intelligent modules.

	LOTIPAK	MINIPAK	DYNAPAK	CITYPAK	POLYPAK	INTERPAK	EUROPAK
Usable depth (mm)	-	-	-	48	-	65 / 78	65
Usable width (mm)	-	-	-	54	-	62	72
Max. number of modules (L = 18mm)	-	-	-	3	-	3	4

CONNECTION ZONE

Terminals or terminal blocks according to wiring needs.

	LOTIPAK	MINIPAK	DYNAPAK	CITYPAK	POLYPAK	INTERPAK	EUROPAK
Usable width (mm)	37	43	54	54	60	60	72
2 NETWORK cables max. configurations	$\leq 4 \times 10\text{mm}^2$	$\leq 5\text{G } 6\text{mm}^2$ (*) $\leq 4 \times 16\text{mm}^2$	$\leq 5\text{G } 16\text{mm}^2$ $\leq 4 \times 25\text{mm}^2$		$\leq 5\text{G } 25\text{mm}^2$ $\leq 4 \times 35\text{mm}^2$		$\leq 5\text{G } 35\text{mm}^2$
3 NETWORK cables max. configurations	-	$\leq 4 \times 10\text{mm}^2$	$\leq 5\text{G } 16\text{mm}^2$ (*)		$\leq 5\text{G } 25\text{mm}^2$ (*)	$\leq 5\text{G } 25\text{mm}^2$ (*) $\leq 4 \times 35\text{mm}^2$ (*)	$\leq 5\text{G } 35\text{mm}^2$ (*)

(*) Limit configurations: tight wiring.

